





# My message to all Nyeri County citizens

All people in Nyeri County have asked me to seek re-election for the Office of Governor to continue my work from where we have reached so far and I have humbly accepted the request. Thank you for the honor and trust you have in me.

When I assumed the office as the Fourth Governor of Nyeri County, I led my team to develop a clear vision and mission for my government. On the basis of this visionary and missionary thrust, a lot has been achieved within a time span of four years.

I am in agreement that in the first 4 years of my tenure as your Governor, the county has transformed in terms of growth from county number 45 in the world bank ranking assessment to number one. In 2018, I promised that I would make a difference and I am pleased to report that together, we have delivered the promises as I stipulated.

Nyeri county has immense potential for growth, modernization, and prosperity. The growth that will not leave anyone behind; the modernization that secures our future for generations to come; and the prosperity that we can all share and enjoy as we walk together in the development path.

As stakeholders, we have alongside worked very hard across this county and laid the foundations for a vibrant and modern county that provides us all with the platform to achieve our true potential. This work will continue at an unparalleled rate in the next five

years.

Employment creation is at the heart of my next government administration's priorities number one. We commit to creating 200,000 jobs over five years to ensure that our people, particularly youth, women, and people physically challenged and the marginalized can secure and maintain good jobs that enable them to enjoy their livelihood.

We will continue to promote investments in sectors that are growth-oriented and have high prospects of job-creating. We will build a hi-tech agriculture industrial revolution in the county to increase agriculture production to feed our people and have a surplus for export and manufacturing. Our plan is to continue to develop our county's ICT incubators hubs, innovations, and energy infrastructure so that Nyeri attracts a global industry hub and, with it, a huge expansion in sustainable, high-quality, hi-tech jobs for everyone, young and old.

My government has already delivered improved agriculture production, improved feeder roads at all sub-counties, food security, trade, tourism, marketing poverty reduction and expanded access to affordable health care, and high-quality public services delivery. We must now redouble our efforts to build upon the foundations of these successes.

The task is not yet complete. The work must continue and should not be derailed.

As I seek to continue to serve as governor of our great county, I am assured that I have the vision, experience, skills, and trust to deliver the stability, continuity, and responsible governance that our

county needs at this critical moment in our development journey. As the past four years have shown, what I promised I have delivered. With this manifesto, I present to you my plan for how we will continue to make the aspirations of us all, and for our county, a reality. Our commitment to the people of Nyeri is to continue to work with all stakeholders to build on these strong foundations; create more and better jobs; raise the living standards of every citizen; end inequality and lift more people above the poverty line.

Together, we will ensure a sustainable development and shared prosperity for all citizens in a prosperous, caring county. Together we have made giant strides in the last four years. We have put the county on the path of social and economic transformation.

My fellow citizens am humbled to ask you to vote me back in order to maintain the momentum that we have built in the last four years to ensure that we take Nyeri county to the next competitive level as a highly industrialized county. It has been an honor and a privilege to lead this great county for the last 4 years. I believe my government's record and my impeccable credentials are worthy of support and I ask you for your vote on August 9th, 2022.

.....  
H.E Mwalimu Mutahi Kahiga  
Governor, Nyeri County.

# Table of Contents

Our Vision for Nyeri County .....4

Continuing Nyeri Transformation, together .....4

## **Pillar One**

Governance .....5

## **Pillar Two**

Economic transformation.....9

## **Pillar Three**

Social transformation .....20

## Our Vision:

A wealthy, healthy, and secure county

We will be the best and most admired county that leads in industrialization, innovations, and security to create jobs, provide timely solutions to our customers' needs with unsurpassed growth, and values to create wealth

We will support entrepreneurs, create enterprises, and investors in capital investment of companies of all sizes to promote and create opportunities for all.

## If re-elected my government will:

1. Continue to increase government-sponsored apprenticeship program of up to 12 months for university and college and TVET graduates from 200 annually to 400.
2. Expand the primary school bursary program from Ksh.160 million to Ksh. 200 million annually to include free day public secondary schools in the county.
5. Facilitate mass housing construction of at least 5000 affordable homes in 5 years across the county by working in partnership with financial institutions, private developers, manufacturers of building materials, and cooperatives to deliver homes faster and reduce the cost of construction by at least 50%.
6. Invest in highly specialized cancer treatment equipment to offer oncology services, ICU, and renal in the county referral hospital. This will bring medical tourism to Nyeri county from neighboring counties and increase revenue collection and reduce the burden of seeking medical treatment from abroad.
7. Ensure that all the county government institutions are connected to solar energy to cut the escalating cost of electricity bills by 2027.
8. Transform agriculture to increase food and livestock production to become food self-sufficient double the fertilizer intake as well as organic fertilizers to reduce the cost of production to farmers to less than Ksh 1,500 per 90-kilogram bag. Expand the program to include all crops with a resultant increase in production and support the introduction of drought-resistant crops in semi-arid areas.
9. We will increase connectivity and expand the water coverage from 65% to 90% for rural and from 70% to 98% in urban areas, rehabilitate 20 dams and 100 water pans to increase water supply for irrigation, power generation, acreage under irrigation to 200,000 Hectares to safeguard food security in the county, and create employment in semi-arid areas in the county.
10. Make government more transparent and accountable through the digitization of all government procurement; expand cashless revenue collection through Nyeri e-pay e-services to mitigate on revenue collection leakages.






# PILLAR 1

## GOOD GOVERNANCE

OFFICIAL LAUNCH  
OF THE  
**3RD INTERNSHIP  
PROGRAMME**  
*Empowering the Youth*

ON THURSDAY 14TH JANUARY 2021 AT 8AM

BY

 H.E. HON. MUTAHI KAHIGA  
GOVERNOR - NYERI COUNTY



# GOOD GOVERNANCE

## Vision

A County that is innovative, transparent, effective, and efficient in-service delivery;

## Achievements

- We have offered training opportunities for 800 youth interns through the Governors Internship Program and absorbed 50 among the successful interns in various County Departments and over 3,000 from institutions of higher learning have benefited through industrial attachment.

- We have ensured that the dues of

exiting employees are paid on time whether voluntarily or through natural attrition.

- We have formulated and legislated over 40 policies and laws; established governance structures to provide quality, efficient and effective services to all the devolved units through the appointment of the CECMs, the CPSB, Sub-County Administrators, and Ward Administrators.

- We have established oversight bodies such as the Internal Audit Committee, County and Sub-County Alcoholic Drinks Control Committees, Nyeri Municipal Board, and Governor's Delivery Unit.

- We have developed, cascaded and dis-



played Service Delivery charters for all the County Departments to guide in the provision of services to the citizenry.

- The government has further recruited and trained 300 enforcement officers
- Through public participation and civic education forums, the citizens are engaged in the budget and Economic meetings forums comprising of professionals drawn from different fields that spearheads the Budget making process and in the determination of the projects at the grass-roots
- We have devolved Strengthened Civic Education and Public Participation through training of 40 civic education trainers of trainers, trained 400 County staff on Civic Education matters, held 60 sensitization forums on Covid-19 prevention and vaccination, trained County and Sub County Complaints Handling Committee members.
- We have continually and promptly disseminated information to the public through News-letters and weekly reviews, publish and share core information on education and communication materials (IEC) Posters, Fliers, Brochures, and Roll-up banners.
- We have enhanced effective and efficient service delivery through performance contracting and the establishment of an electronic integrated performance management system

## Our Commitment

What is our shared motivation for yearning for better leadership for Nyeri County?

- We will create and sustain “a highly motivated and Responsive Public Service”, that adheres strictly to the laid down rules and regulations; continue with youth Empowerment by increasing the number of interns from 200 to 300 annually and create more opportunities for trainees from Industrial Attachment;
- We will progressively continue to automate service delivery processes to improve on the ease of doing business through inter and intra netting and paperless communications, implement e-Government, Quality Management System, and Information Security Management System, with ISO certification as the climax in various County Departments for efficient and effective service delivery;
- We will sustain capacity building on County Staff Social welfare through continued investment in welfare schemes including WIBA, Medical Cover, Pension, and Gratuity;
- We will always uphold the rule of law and promote equality in service delivery and sharing of resources; invest in capacity building of the County Staff to equip them with skills and competence for effective service delivery; set up Community information and service delivery Centers at the Sub-County, Ward and Village levels;
- We will continue to engage citizens in public participation and civic education, Focused Group Discussions in policies, ward-specific projects determination, and also in guiding policies formulation and follow-up on their implementation
- We will remain impatient with Unprofessionalism, Retrogressive and Selfish leadership



that have political patronage networks that may send our County to social and economic vicissitudes.

- We will enforce a high level of integrity against grand corruption, plunder, and open looting of our County's public resources at whatever level either in the Executive or County Assembly.

- We recognize the urgent need to establish an ethical, transparent, and accountable, governance structure and system for our County.


- We will build a multi-skilled, educated, and well-informed public service for effective and efficient service delivery to the citizenry.

- We deserve openness, honesty, and equity in managing competing interests within our County.

- We have the urge to unify all the people of Nyeri into one cohesive County community with shared interests and aspirations.





A person wearing a dark t-shirt with 'WINNIPEG POLICE HALF MARATHON' and 'DO NOT CROSS 2013' printed on it is working on a dam. They are holding a long wooden pole. The dam is made of concrete and has a wire mesh fence in front of it. The background shows a large, steep, rocky hillside.

# **PILLAR 2**

## **ECONOMIC TRANSFORMATION**





# ECONOMIC TRANSFORMATION

## Vision

To be a resilient, middle income and investor-friendly county.

## Achievements

- We have graded and opened 3710 km of rural roads to gravel standards, constructed 25 bridges; 18 box culverts, and seven footbridges; graveled / murram 1,100 Kms of graded roads; opened 37 new access roads; designed and completed construction of 300 utilities and installed biogas to over 50 households across the County.
- We have installed 2,898 street lights and 207 floodlights equivalent to 145 Kms,
- We have procured and commissioned 23 coolers and one milk pasteurizer, improved dairy breeds through the provision of artificial insemination services (AI) to 60,000 dairy cows over the last 4 years. This has led to increased milk production from 95 million liters to 126 million liters over the 4 years





- We have improved disease surveillance and control to 300,000 against outbreaks, distributed Indigenous KARI improved Chicken and dairy goats to 26,000 households that have addressed the issue of food income and nutrition security.
- We have Rehabilitated 234 ponds and installed 114 pond Liners, and re-stocked 944 ponds with mono sex fingerlings
- To increase agriculture production, we have distributed 10,908 packets of organic fertilizer (Mycorrhizae) to coffee farmers which have contributed to the improvement of coffee cherry production from 19.7million kilos to 30 million kilos over the last 4-years;

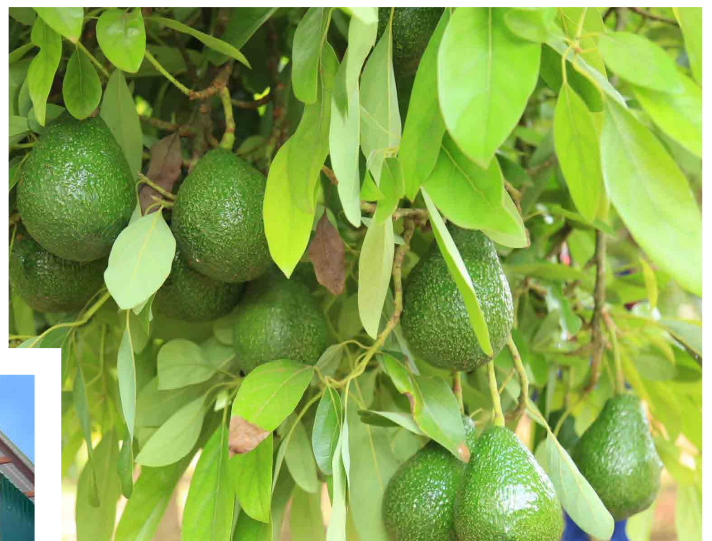
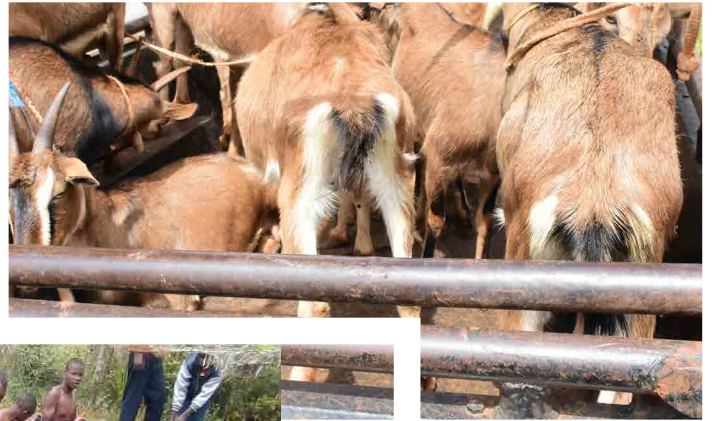






- We have issued 840 tons of manure to coffee farmers to improve soil fertility, distributed 250, 000 fruit tree seedlings; Grafted and issued Hass Avocado, Macadamia, and Mangoes that benefited 12,500 households.
- A total of Ksh. 64.5 million have been disbursed to support six cooperatives (Wakulima Dairy, Kieni Dairy Product Ltd, Sabeke Co-operative, Nyeri South Banana, Mukeni Poultry, and Mwikuria Grains Cooperative Societies). The capital investment has enabled the cooperatives to access the market through value addition.
- We have developed a County spatial plan that will guide in the mapping of all county projects and programs in the next 10 years, twenty-six (26) ten years Local Physical and Land Use Development Plans to guide Human settlements through the provision of social and physical infrastructure, processed 1000 title deeds, vetted and approved 3,600 development applications that comprise building plans, subdivisions, amalgamations, change/extension of use, and renewal/extension of leases.
- We have promoted and diversified trade in the county by constructing and rehabilitating 43 markets; disbursing Kshs. 30 million to entrepreneurs across the County through Enterprise development Fund and constructed 180 stalls across all the wards to improve the business environment and enhance accessibility to goods and services.









## **Our enablers**

### **Roads, Transportation, and Energy**

#### **Vision**

A world-class provider of cost-effective, physical, infrastructural facilities and services

#### **Our commitment**

- We will upgrade all major town roads to bitumen standard, 2000 kilometers to all-weather roads standards across the County, and maintain an estimated 3000KMs.
- We will construct and maintain five hundred public facilities, install 300KM with street lighting in all urban and peri-urban centers to facilitate a twenty-four-hour economy.
- We will build bridges across all the major rivers in the county and construct high standard culverts on all roads to make them more durable and safer for use by our residents.
- We will promote road linkages between access roads and main roads, by marking, signage, and creating walkways for pedestrians and cyclists.
- We will optimally use the railway line for marketing agriculture and livestock products to link with the LAPSET for improved transportation and Beautification of roads.
- We will promote the overall use of green energy in public offices businesses, homes, public institutions, and utilities to cut on escalating growth in power bills.



# Value chains

## Agriculture, livestock, and fisheries

### Vision

To be a food secure county and value addition for wealth creation

Nyeri County is predominantly agriculture-based which contributes over 30% to the GDP and about 40% of government revenue. In addition, about 80% of the population relies on agriculture, directly or indirectly, for employment and livelihood. The success of our transformation agenda, therefore, hinges on the success of the agricultural sector. We shall support the modernization and commercialization of agriculture with a focus to make farming an attractive business than the way of life and career for young people by promoting agriculture and agribusiness.



### Our commitment

● Is to transform agricultural productivity as a key focus of our strategy going forward to ensure that Nyeri County becomes food secure, by reducing reliance on rain-fed agriculture through highly mechanized irrigation such as drip irrigation, providing input support to farmers, adding value to our products, and expand markets locally, regionally, and internationally.



● Complete the 20-large-scale dam construction program, support small-holder agricultural drip irrigation, and work with the private sector to enhance commercial agricultural production on at least 100,000 hectares.

● Double the fertilizer and organic manure intake to increase production per hectare and lower the cost of production, expand crop varieties to include all crops with a resultant increase in production and encourage drought-resistant crops in semi-arid areas; support the expansion and capacity of local to produce cotton and other drought-resistant crops



● Establish Centers of excellence through public-private-partnership arrangements such as a one-stop-shop for mechanization services for smallholder farmers, enhance extension services, and use ICT to educate farmers and link them to virtual markets to

● Work with Regional County Economic blocks to establish at least one agricultural produce market that provides a central outlet for agricultural produce where farmers can sell directly rather than through middlemen to enhance one sub-county one-product initiative. This will not only facilitate post-harvest management of food through food storage facilities, cold rooms, and transport and distribution networks across the county but also stabilize prices and incomes to the farmers

● Encourage the formation of marketing cooperatives to stabilize market prices for products from small-scale farmers in maize, wheat, and potatoes, avocados, and dairy. This will provide incentives for the integration of youth into agribusiness value chains, including market guarantees and incubation training and scholarships for youth to agribusiness.

● We will transform and commercialize agriculture through improved value chains in terms of production, value addition, and agro-processing for increased income. These value chains include; Dairy, coffee, Irish potatoes, indigenous poultry amongst others.

● We will provide and distribute certified seeds to farmers for high production, allocate 10% of the total budget to the agricultural sector in the next 5 years, strengthen and organize the value chains to promote high-quality produce and aggregation of produce for easy access to markets.

● We will promote business through incubation centers for the development of cottage industries, aggregation of produce, value addition, development of marketing platforms for agro-processing.





# Lands

## Our commitment

- We will issue out title deeds to all colonial villages in Nyeri County by 2027 this includes individual holdings, churches, schools, other public institutions, and digitization of lands records
- Through Public-Private Partnership, we shall construct 300 low-cost housing units in the county.
- We will fully implement and operationalize the spatial plan by mapping of all projects, activities, fauna, flora

## Information, Communication, and Technology

- We shall automate and offer some county services in real-time such as application licensing and approval processes to improve market linkages through ICT platforms that will help access inputs, markets, and other agricultural information.
- We shall improve service delivery on ease of doing business by establishing a call center toll-free lines for inquiries and establishing WFI hotspot for 100 villages





## Affordable business capital

● To create employment opportunities for the youth and cottage industries, we will increase Enterprise Development Funds (EDF) lending from 55 million to 500 million at an interest of 5% by 2027. The EDF lending is projected to have a ripple effect that would create job opportunities for more than 100,000 people.

## Cooperative movements

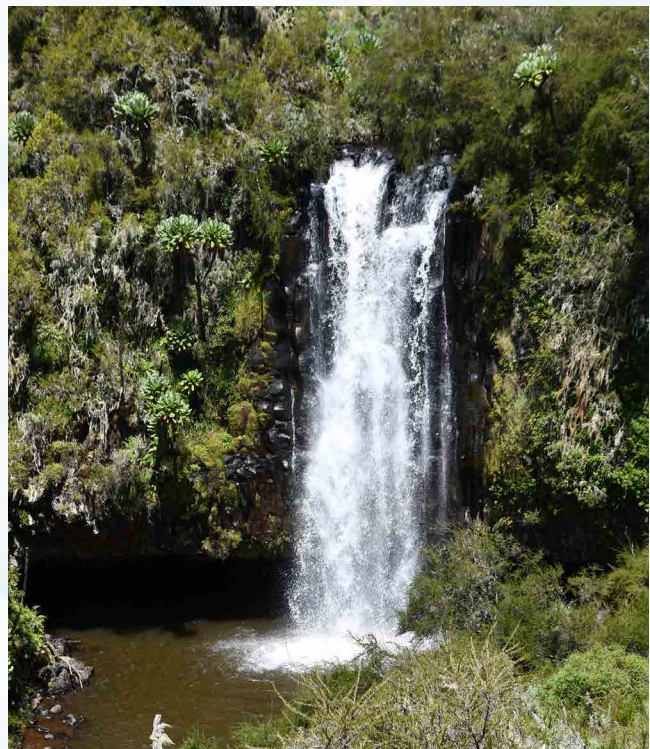
● To enable cooperatives to benefit from economies of scale, we will support cooperatives in commercialization to increase the value chains, acquire new technology to improve efficiency to promote value addition for their products.

● We shall Initiate and continue supporting gender mainstreaming efforts and youth involvement in the cooperative movement and revamp the Co-operative Sector by Creating Co-operative Development and Marketing Fund.

## Tourism and culture

● Nyeri will be the choicest tourism destination both locally and internationally. We will carry out mapping of tourism niche products both fauna and flora and identify tourism sites and develop a web-based electronic catalog to market our products.

● The platform targets, eco-tourism, agrotourism, adventure tourism, cultural





heritage by developing talents across the 8 sub-counties on photography and videography, film creation, and performing arts and promote sports tourism

- We will give three years of tax holidays incentives to companies starting and scaling up their business in Nyeri county. This will tap the benefits of the railway and dual carriageway Kenol to Marua. The policy is intended to attract more than 100 companies regionally and internationally and create more than 2000 jobs.

## Finance and Economic Planning

### Vision

A healthy, wealthy, financially stable county

### Achievement

- We have Limited Local (Own source) Revenue Resources from the equitable share (National Government) which has remained constant for the last 3 years while the funding from development partners (donors) is not predictable.

- We have cashless system revenue collections and we have the potential to collect more than Kshs.2B from our own generated resources through these automated services that have curbed corruption. This has led to an increase in revenue collected over the years to a total of Kshs. 887M is the highest ever attained since devolution started.

- The center of focus for development planning in the county is ward but mainly deals with “brick and mortar” projects, however, the targeted development planning as a recipe for accelerated economic growth will target the entire value chain of our products.





## Our commitment

We will broaden the revenue base, without increasing the current chargeable rates as follows;

- Increase the number of parking areas in all our major towns, seal all the loopholes on cess collection, especially from our quarries, automate the collection of all revenue streams to 100% through Nyeri Pay
- We will eradicate all revenue leakages by automation of processes through Enterprise Resources Planning Solutions to undertake, real-time evaluation analysis for projects and programs, streamlined financial close processes, Planning, budgeting, and forecasting capabilities, and enterprise risk management
- We will engage the public in the county budget process in developing an Economic Development Blue Print at the ward level namely; “Ward Focus for Accelerated Development” The blueprint will consider the comparative advantage of every ward/sub-county to generate programs addressing the value chains.
- We will create jobs for the youth by converting some of the Youth training centers to production units for the county innovators based on their competitive advantages, restructure Wambugu ATC to a “Nyeri County Development Cooperation (NCDC)” to manage ATC and Agricultural Mechanized Services (AMS) to a profit/cost center.
- The AMS has an unexploited potential that can create enormous employment opportunities in the county converting it into Export Processing Zone that can generate dividends to the county.





# PILLAR 3

## SOCIAL TRANSFORMATION







# SOCIAL TRANSFORMATION

## Our Vision

Our vision is to build a healthy, wealthy, educated, and productive county that creates jobs for its youth.

The youth in the county comprise 60 percent of the population and we should ensure that every citizen has access to the best possible healthcare, income, food security, at affordable prices.

## Water and irrigation

Vision:

A Sustainable supply of clean water for domestic consumption and irrigation in a clean and secure environment

## Achievements

- We have connected 65% of the county citizens with clean treated water for domestic use which is estimated at 160,000 households.



- We have extended 252 Km of water pipeline, constructed two Water Treatment facilities for NAROWASCO and TEAWASCO, drilled and rehabilitated 29 boreholes, constructed 14 intakes, 39 masonry tanks, and issued 209 plastic tanks to the 30 wards

- With engagement with stakeholders, major irrigation projects have been funded and water pans for households and institutions have been provided.

## Our Commitment.

- We will increase and expand the water connection from 65% to 90% for rural and from 70% to 98% in urban areas

- We will develop a Sewer Master plan that will map the connection of all urban towns in the 8 sub-counties in Chaka, Naromoru, Mweiga, Kiama Riga, Kiawara, Giakanja, Riamukurwe, and Gatitu

- We will rehabilitate 30 dams and 100 water pans to increase water supply for irrigation, power generation, increase acreage under irrigation to 20,000 Ha from the current 5000 Ha. This will benefit over 80,000 families through irrigation to increase food production to feed the people in the county and create employment in semi-arid areas in the county

- To exploit our water comparative advantage, and in partnerships with stakeholders in the water sector, we will establish water bottling plants for sale regionally and internationally. The ripple effect of this project will create formally and informally over 200,000 jobs due to the related value chains

- We will create more jobs in the carbon trade by harnessing forest cover from the current 38% to 42% by planting 50,000,000 million trees, establishing community Forest Associations for all the 12 County forests, and establishing green parks spaces in major towns









# Education & Sports

## Vision:

A globally competitive education and training system that is innovative and sports-focused for sustainable development.

## Achievements

- We have disbursed Elimu Fund bursary amounting to Kshs. 440 million to 84,000 beneficiaries in the last four years.
- We have employed 800 ECDE Caregivers, formulated ECDE policy and VTC legislation, and provided learning and teaching materials to all 437 ECDE Centers annually.
- We have finalized the scheme of service to translate all the ECDE caregivers to permanent and pensionable terms
- We have constructed 34 new ECDE Classrooms, renovated 21 centers, constructed 14 new VTC workshops,
- We have renovated a sports hostel at Ruring'u stadium, procured sporting equipment and a bus, constructed a perimeter wall at Ruring'u and Karatina Stadiums, constructed ablution blocks at Kinunga and Naromoru Stadiums, and installed a network mast at Rukira VTC ICT hub.

## Our commitments

- We will introduce a Free School Milk program to every child at the ECDE pupils twice a week to improve their nutrition and construct 50 CBC model classrooms, 100 ablution blocks, and improve on existing sanitary facilities
- We will provide state-of-the-art sports infrastructure, training, and recreational facilities for the youth, men, women, and PWDs to attract their talents
- We will increase the Elimu Bursary Fund from the current 160 million to 200 million annually to cater for the increasing demand of the vulnerable needy cases.
- We will transform the Vocational Training Centers into business hubs and centers of excellence in each of the 8 sub-counties, recruit high skilled instructors to make them more innovative and competitive in the informal market



# Gender, Youth and Social Services

## Vision

A lead-in promotion of social equity to all, in promoting social-economic development and disaster management.

## Achievement

- We have acquired two (2) modern fire engines, constructed two (2) new fire stations at Othaya and Kiawara, recruited 150 youth through the Kuza Kazi Youth Empowerment Programme in partnership with Coca Cola Company Almasi Beverages, constructed Two (2) new modern social halls at Kariki and at Muruguru
- We have renovated community social halls at Chinga and Mweiga community, constructed a Multipurpose Hall and a Kitchen at Karatina Children's Home, and a modern rehabilitation center for drug and substance abuse at Ihururu.
- Through the youth empowerment program, we have distributed equipment worth Kshs. 26 million to youth groups in 15 Wards.
- We continue to support vulnerable groups affected by the disasters rebuilding and providing building materials, food, clothing, interment expenses to bereaved families, and food rations to the orphans at Karatina Children's Home

## Our commitment

- We will purchase five new firefighting engines and emergencies rescue vehicles to reduce the distances of firefighting services across the county, recruit more trained disaster management officers and sensitize the community on Disaster prevention and mitigation measures
- We shall construct and rehabilitate fire stations in all 8 sub-counties, install water hydrants in all 30 wards, deploy fire engines to all 8 sub-counties, and institutionalize the Disaster Management directorate





- We shall construct and renovate social halls in all 30 wards, construct staff quarters for Karatina Children's home, purchase devices for People with Disability, provide Relief Support to vulnerable homes with food and non-food items, provide medical cover for vulnerable persons and sensitize registration of NHIF to all for ease access of treatment in the hospitals,
- We shall on continuous basis support patients recovering from drug and substance abuse in Ihururu Rehabilitation Centre, incubate and nurture Youth, Women, and PWD groups in business startup, vetting and provision of identity cards and psychological support to street families.
- We will continue to restore the dignity to a vulnerable group of girls and women by providing sanitary Towels of dignity kits, constructing and equipping a safe house for sexual and gender-based violence survivors, establishing a Gender Monitoring System, establishing and capacitating a multi-sectoral Gender Sector working group, establish gender and Youth directorate.
- We shall institute a Youth Council from the ward level, create a revolving widows fund, develop an incubation and mentorship center to equip the youth with ICT skills that will enhance the starting of businesses and venture into related enterprises
- We will strengthen and increase the vocational training centers for the provision of relevant skills training and development, support the youth in identifying and nurturing talents, train and empower 250 youth in VTC with employability soft skills annually and train 100 youth in AGPO annually.

## Health Services

### Vision

An efficient and effective high-quality health care service that is accessible, equitable, and affordable for all.

### Achievements

- We have developed public health infrastructure that comprises one (1) level V hospital, four (4) level IV, 31 health Centre 90 dispensaries that are fairly distributed within a radius of 5-7 km, and a facility density of 3.9 per 10,000 populations.
- We have fully vaccinated 231, 644, first dose 306,680, and 11, 306 persons have been vaccinated Covid-19 booster dose.
- This accounts for 45% fully vaccinated, 60 % first dose which attests Nyeri county as the lead in the country in the number of persons who have received COVID-19 vaccination.
- We have procured, Biochemistry Analyzers for Six Rural Health Facilities, 3 Parts Hematology Analyzers for Five Rural Health Facilities, Clinical chemistry analyzer for Karatina, Mukurwe-ini, and Mt. Kenya Sub-County Hospital, Dental units complete with oil-free com-





pressor and accessories for Karatina and Mt. Kenya Hospital, installation of Laundry Machine, Mt. Kenya Sub County Hospital, procurement and Operationalization of the ECG and LEEP machines.

- We have supplied and installed Bulk oxygen plant and piping at Karatina Sub-County hospital (ongoing) and Mt Kenya Hospital among others
- We have procured and supplied health commodities to all 130 health facilities with a fill rate of over 80%.
- We have operationalized the 6 Intensive care Unit beds from 3 making it 100% operational, expansion of the renal and dialysis unit by 2 additional machines
- We have 99 percent fully Immunized Children; 70% with 4th ANC Coverage; Skilled Deliveries of 95%; HIV patients on ARVs 101%; and HIV patients achieving viral suppression 99%.
- We have procured three modern ambulances fully equipped with oxygen cylinders, drip, resuscitating equipment and are served by professional clinicians who attend to patients in critical conditions on transit to the referral hospitals

## Our commitment

- We will implement preventive and promotive health services to mitigate against the spread of both communicable and non-communicable diseases, implement a “best practice” plan for quality improvement and patient safety.
- To reduce the burden on cancer treatment, we will invest in highly specialized equipment to offer oncology services, ICU, and renal in the county referral hospital. This will bring medical tourism to Nyeri county from neighboring counties and increase revenue collection
- To ensure equity to access all health care services, we will develop a public participatory forum that will ensure all the county citizens register for the National Health Insurance Fund, establish ICT infrastructure to primary healthcare facilities to enable them



make claims from insurance, and establish an automated revenue collection system in all revenue streams at health care facilities

- To ensure accountability in the operationalization of the Health Fund, we will establish Health Management Information Systems (HMIS) to strengthen data collection in one-stop-shop services. The system will support planning, management, and decision-making in health facilities and organizations.

- The HIMS will be analyzing and processing data, payments, reporting of the community health information system (CHIS), which is on an individual and family basis, information related to vaccines stock and restocking of pharmaceuticals and non-pharmaceutical products in real-time, family planning, maternal and child health, HIV treatment, and support, and other services and makes it available all in one folder.

## Solid waste management

### Vision

To sustain a healthy and clean environment.

### Achievements

- We have sustained a clean environment by collecting 110,000 tons of garbage annually in towns, clearing bushes along the feeder roads, and unclogging drainage systems. We have constructed 71 waste receptacles as a drop of points for the garbage.

- To enhance efficiency in garbage collection we have shifted from waste chambers to skips and have acquired 29 skips and 2 specialized collection trucks.

- To curb illegal activities mainly associated with dumpsites, we have constructed perimeter walls at Karindundu, Gikeu, and blue valley waste transfer station where reusable and recyclable waste is sorted to enhance waste recovery.

### Our commitment

- We will establish electronic waste drop-in centers in every sub-county to enhance efficiency in waste collection and provide color-coded litter bins and skips for every major market and shopping center for wastes separation.

- We will engage with public-private partnerships to invest in recyclable and biodegradable waste equipment that will sort as well as process waste to better uses and to ensure that the non-recyclable is well-disposed in designated sanitary landfills. This investment will create more than 500 jobs for the youth.



